

Jefferson Charger News

JEFFERSON ELEMENTARY SCHOOL NEWSLETTER



MARCH 2020

VOLUME 3, ISSUE 7

From the Principal

The last month has flown by – how did it get to be March?! The time from now until spring break is one of our longest uninterrupted stretches of the year, and we are looking forward to all the learning that will happen. We are heading into a busy time of year for school events. Here are ways families can be involved at Jefferson this month:

- **Come to free events:** Family STEM Night is at 6:30 p.m. March 16. Come take part in fun activities focused on science, tech, engineering, and math! The PTA Talent Show is at 6:30 p.m. March 20, and a PTA movie night is at 6:30 p.m. March 27.
- **Attend conferences:** Be sure to set aside time the last week of the month to attend a conference with your child's teacher. These conferences provide an important opportunity to discuss your child's progress, and to learn about how you can support learning at home. We will be using the same online scheduling process that we tested in the fall. More information will come out the second week of March.
- **Take our survey:** Educators are constantly asking ourselves how we are doing in our quest to help students become their very best selves. Now, we want to know how you – our community of families – think we are doing. Jefferson, like all Everett Public Schools, is committed to continuous improvement. Each year, we seek your insight to help us create our School Improvement Plan. You are invited to take part in this year's anonymous survey developed by the Center for Educational Effectiveness, a Bellevue-based research firm, for Everett Public Schools. A paper copy of the survey is coming home soon, or you can take the survey online at <https://www.research.net/r/eps-parent>. You may choose either method to respond. Although the survey is open through April 3, we are asking for paper copies to be returned by March 30. Your opinions are very valuable to us, since you are partners in the education of students.

Elizabeth Kelley
Principal

Jefferson Elementary School
425-385-7400
2500 Cadet Way, Everett, WA 98208
www.everettsd.org/jefferson
https://twitter.com/EPS_Jefferson

March 6

2:15 Learning Improvement dismissal
PTA fun runs (families welcome)

- Grades K-1: 10:00 a.m.
- Grades 2-3: 1:00 p.m.
- Grades 4-5: 11:00 a.m.

March 12

PTA General Meeting, 6:30 p.m.

March 13

2:15 Learning Improvement dismissal

March 16

Family STEM Night, 6:30 p.m.

March 20

2:15 Learning Improvement dismissal
PTA Talent Show, 6:30 p.m.

March 27

1 p.m. dismissal
PTA Movie Night, 6:30 p.m.

March 30-April 3

Conference week, 1 p.m. dismissal
Book fair
Spring break is April 6-10!

Continued on next page



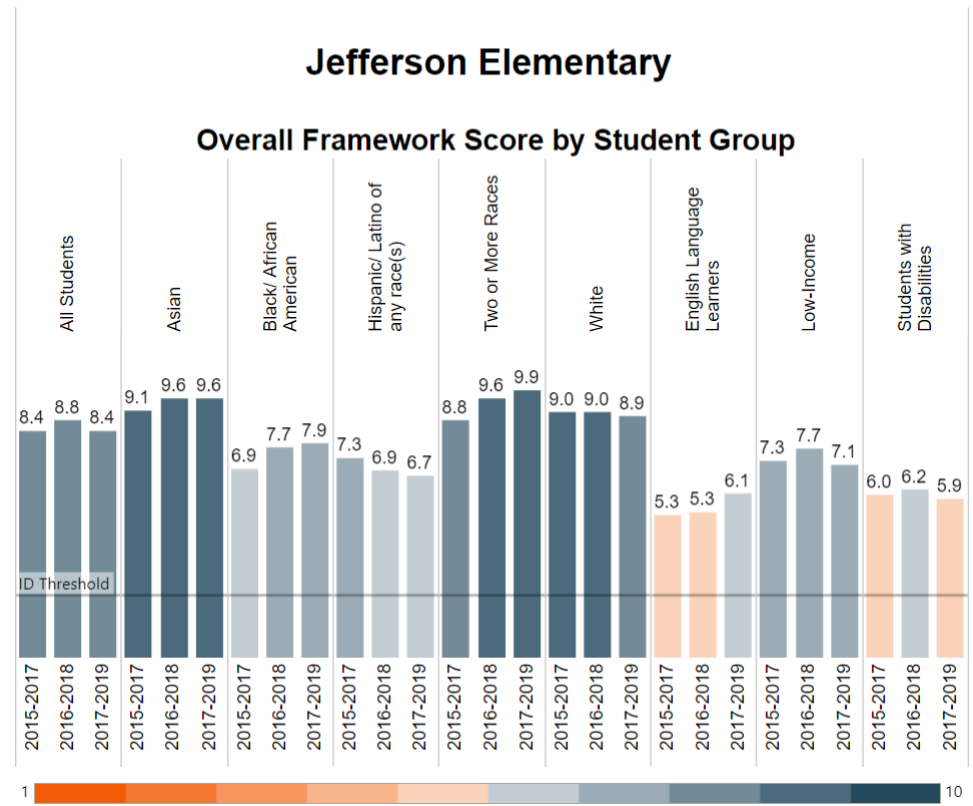
From the Principal, continued from previous page

Measuring School Improvement Efforts

Initially released in March 2018 (and last updated in February of 2020), the Washington School Improvement Framework (WSIF) identifies how schools can improve the education of all students. The Framework combines as many as nine indicators (such as graduation rates, attendance, and proficiency on state tests in math and English language arts) into a 1-10 score. The school's score then determines the state supports for the school to improve. Below is a look at Jefferson's trend data. We want our numbers to be as high as they can in each part of the bar graph, and we don't want to see

Summary Details Support **Trend** Detailed Trend

How did each student group perform on the Washington School Improvement Framework, over time?



gaps between the data for different student groups. Our data tell us where we need to focus our improvement efforts. For more on the WSIF, and to see other data for Jefferson, visit

<https://washingtonstaterreportcard.ospi.k12.wa.us/ReportCard/ViewSchoolOrDistrict/102451>

Around the Corner: SBA/MSP Testing

Jefferson students in Grades 3-5 will begin this year's state-mandated Smarter Balanced Assessment testing the last week of April/first week of May. Each grade level will have two days of testing in English language arts and two days in math. Fifth-graders will also take the one-day Washington Comprehensive Assessment of Science. The tentative schedule is below; please mark your family calendars. Although we can provide make-up testing due to illness or emergency, we ask that students be on time each day, and that you avoid scheduling medical appointments or other absences on testing days.

- Third grade: May 7, May 13-14, May 19, May 21
- Fourth grade: May 6, May 13-14, May 20, May 22
- Fifth grade: April 28-29, May 5, May 12, May 15, May 21

Have a great month of March!

Mrs. Kelley



Three Must-knows This Month

In this space, we will highlight three items each month that we think are really important for you to know about!

Jefferson Bond Projects	PTA Carnival Chair Needed	i-Ready Webinar
On April 28, you will have the opportunity to vote on a bond for Everett Public Schools that will focus on improvements throughout the district in safety, space, and STEM programs, while ensuring equity for all of our students. To learn more about the projects proposed for Jefferson Elementary, visit this link .	The PTA Carnival, rescheduled for June 12, will only happen if a parent or two step up to chair the event. If you would like to help, please e-mail Board@jeffersonpta.org .	Don't miss an opportunity to learn more about i-Ready from the comfort of your own home through a webinar on March 5. See this site for details.

News from Mrs. Graham, PBIS Specialist

In February's newsletter, we took a close look at Social Emotional Learning Standard 1, which outlines benchmarks for developing self-awareness of one's own emotions and how our emotions influence our behavior. Below is a deeper look at closely connected Standard 2, which defines managing one's emotions, thoughts, impulses, and stress in constructive ways. Jefferson's Positive Behavior Intervention and Supports program provides students with a nurturing environment to develop these skills and is supported by our Second Step curriculum.

Standard 2	Self-Management: Individuals have the ability to regulate emotions, thoughts, and behaviors.		
Benchmark 2A	Demonstrate the skills to manage one's emotions, thoughts, impulses and stress in constructive ways.		
Early Elementary (K-2)	Late Elementary (3-5)	Middle School	High School/Adult
With adult assistance, I can identify strategies to help me be in control of myself and ask for additional assistance as needed.	I can select and practice specific self-management skills to maintain self-control.	I can demonstrate the ability to reflect on the effectiveness of strategies used to manage emotions, thoughts, impulses, transitions, and stress.	I can gauge the feelings and emotions of others and adapt my behavior by using multiple strategies to deal with my feelings and emotions.

Students can implement strategies to help them deal with strong emotions at school and at home. Some examples may include talking it out, taking deep breaths, writing about their feelings, counting to 10, exercising, walking or running, getting a drink of water, listening to music, or squeezing a stress ball. For ideas on supporting your student's social emotional development, access this [parent toolkit](#). For more information about Jefferson's social emotional learning activities or PBIS, please reach out to me at wgraham@everettsd.org.

News from Mrs. Rockwell, Music Teacher

This month in music, we'll be welcoming spring with folk songs, dances, instruments, and games! We're also looking ahead to our Grade 1-5 concert at the Civic Auditorium on May 18. Our theme is Music from Around the World, and students are providing information about their family heritage to influence the music that we perform. Watch for the Concert Information tab coming this month on my webpage: <https://www.everettsd.org/jfe-drockwell>. Do you have a favorite song from your culture that you'd like to hear at the concert? Please let me know! I'd love to hear your ideas before March 23. Kindergarten families, don't forget the Spring Sing, happening Monday, June 1, at Jefferson.



**Important Reminders
from the Jefferson Office**

Checking a student out early: When checking your student out early, please remember to have photo ID.

Please note: Release of students to emergency contacts in non-emergency situations **requires** the express consent of a guardian. Please send a note to school with your student or call the office prior to their dismissal. Persons listed as emergency contacts are authorized to pick up students in the case of emergencies only. It is a parent/guardian’s responsibility to notify emergency contacts that the school may contact them in the case of an emergency.

LIF P.E./Gym Rotation			
<i>Please remind your student to bring their P.E. shoes on their scheduled days.</i>			
March 6	March 13	March 20	March 27
Clark	Parks		Dersom
Agustin	Nielson	Lemkau	Nielson
Branch	Hanson	Bennett	Clark
Dinneen	Lobdell	Stewart	Lucas
Gray	Gray	Gray	Bye
			Lobdell

Absence reporting: The preferred way to report your student’s absence is by emailing JFEattendance@everettsd.org. Please make sure to provide a reason for absence within thirty (30) calendar days of the absence.

Visitors and volunteers: Please remember to sign in and out of the office. A volunteer badge or visitor sticker must be worn and visible at all times.

Vacation-related absences: If you are planning a vacation and your students will be missing school, please visit the office to fill out an absence request form. **Please note:** Per district policy, we may only excuse **up to** five days for vacation or travel-related absences per year.

Parking Lot & Other Safety Reminders

The Jefferson parking lot is a busy place, and we are asking that everyone in our community follow procedures to ensure student safety and respectful interactions. **Please DO:**

- Use a designated parking space, or park at Eastmont Park & Ride, if you want to get out of your car to meet your student.
- Follow the 5 MPH speed limit.
- Pull forward when dropping off and picking up.
- Use crosswalks.
- Follow adult staff and student safety patrol directions.
- Remember that students are supervised until 3:45, and parking spaces and the pick-up line start clearing up about 3:40.
- Volunteer to help – contact the office!

Please DO NOT:

- Park/exit your vehicle anywhere along the curb or on Cadet Way/El Capitan.
- Pull up and wait (without using a parking space) in the parking aisles of the lot.
- Park and wait (or exit your vehicle) in the curb area past the main crosswalk by the office.
- Call your student to walk across the parking lot to meet you on their own.
- Block driveways or intersections in the neighborhood.

Bicycles, scooters, etc.: Per Everett Public Schools policy, students in grades three and above may ride bicycles to and from school. Students must walk their bicycles on campus, wear a helmet, and lock the bike to the rack behind the cafeteria. Skateboards, scooters, roller blades, roller shoes, etc., may not be ridden on district property. The district is not responsible for loss or theft of student property. If a student rides without a helmet, or does not secure their bike properly, bicycles may be confiscated for parents or guardians to come and pick up.



News from the District

FREE learning tools for your entire family

Did you know that with your parent LMS user name and password, you have access to a powerful resource provided also to students and staff with their district logins? Hoonuit (formerly Atomic Learning) is a key partner in our dedication to providing the highest quality technology training resources.

Our subscription to Hoonuit includes:

- The Microsoft® Office Suite
- Adobe Suite
- Google Drive/apps/docs/forms
- Internet safety
- Career skills training for personal career advancement
- Completing a FAFSA training for college planning
- Access for staff, students and their families 24 hours a day, 7 days a week
- More than 50,000 step-by-step technology tutorials

Go to www.atomiclearning.com/login/everettsd and log in with your district username and password. Need a login and password? E-mail LMS@everettsd.org.

Kindergarten registration begins this month

Do you have a child who will be 5 years old by Aug. 31, 2020? Registration begins March 2 at all 18 district elementary schools. Which school will your kindergartner attend? To find out, go to our school search page [here](#), or call the transportation department at 425-385-4144.

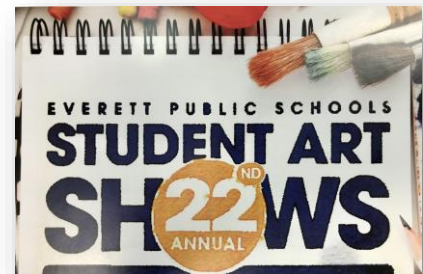
Classified Employee Week

March 2-6 is the time to help us recognize the important work classified staff does for schools and students every day. We encourage you to take a moment and say thank you to office staff, crossing guards, paraeducators, maintenance staff, bus drivers and the many other classified staff who help schools and the district function smoothly.

22nd annual student art shows

Everett Public Schools, in partnership with Everett Public Schools Foundation, is pleased to display the work of student artists at the Community Resource Center. See the art on display during regular business hours (7:30 a.m.-4:30 p.m.) or during a reception.

- Elementary school Art Show: February 25--March 20, viewing only
- High school Art Show: April 6-24, reception on April 15
- Middle school Art Show: May 4-28, reception on May 27



Calendar update



On Jan. 28, the school board approved the 2019-20 school calendar update. We've had three snow days, so the last day of school has changed. As of today, the last day of school is June 18 (keeping in mind this date is subject to change).

Go to www.everettsd.org for updated at-a-glance and student art calendars, English and Spanish versions.

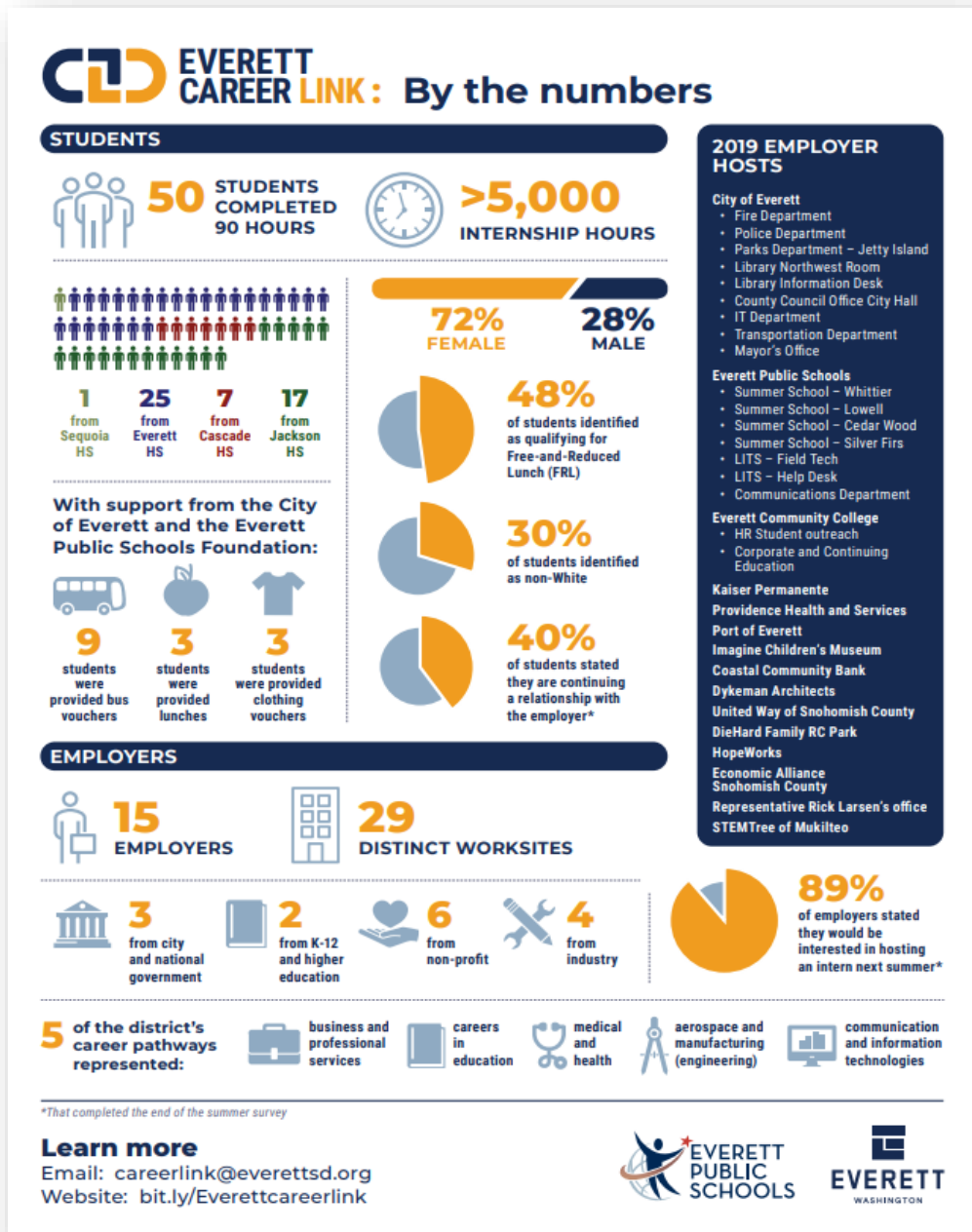


High school summer internships

Summer 2020 will be year two of Everett Career Link, a partnership between the City of Everett and Everett Public Schools that offers high school students internship opportunities. Last summer, 50 students completed the Everett Career Link 90-hour summer internship and received high school credit. These students were hosted by employers representing 29 worksite locations. An overview of last summer's program can be found below, and you should expect more information about the summer 2020 program to be available soon.



Questions about the program can be directed to each high school's Career Specialist or Career Connected Learning Internship (CCLI) Facilitator. The CCLI Facilitator at JHS is Daniel Mills (dmills@everettsd.org). At CHS it's Bree Youngberg (byoungberg@everettsd.org) and at EHS it's Tammy Price (tprice@everettsd.org).





Harvest of the month

This month, the Food and Nutrition Department brings you broccoli grown in the PNW! Be sure to give it a try this month by choosing our broccoli salad or roasted broccoli menu option. Did you know that broccoli is an excellent source of so many vitamins and minerals like vitamins A and K, and folate? Find out more by checking out the Harvest of the Month flyer on our website at <https://www.everettsd.org>. Brocc and Roll!



Remember to register to vote

By registering to vote, either in person or online, you are able to exercise a basic democratic right.

- In person: You may register to vote or change your registration at Snohomish County Elections, 3000 Rockefeller Ave, Everett, 1st Floor, Admin Bldg West.
- Online: If you have a valid Washington state driver's license, you may register with the [Secretary of State](#) quickly and easily online. You may also download a voter registration form in several languages from that site.
- Online: Visit the district's bond 2020 page at www.everettsd.org/bond2020 and click on "register to vote" on the left hand side.

To learn details about elections, visit the [Snohomish County Elections](#) website.

Daylight savings time begins March 8

Sunrise and sunset will be about one hour later on March 8 than the day before. There will be more light in the evening. Also called Spring Forward, Summer Time and Daylight Savings Time.

Do not miss out!

Our school is using Peachjar to send flyers home electronically.

Just go to the front page of our school website and click on the Peachjar Eflyer button to check it out. You do not need to log in to receive or view school eflyers.



No action is required on your part. You should have already received a welcome e-mail from Peachjar that includes a username and password. This is provided to give you the opportunity to manage your account and flyer delivery preferences. Don't worry if you've forgotten your password; you can reset it at any time.

This system is used exclusively for distribution of school-approved flyers. Your e-mail address will not be shared or used for any other purpose.

Update emergency contacts

Please call your school if your phone number or emergency contact information changes at any time during the school year. This is the contact information used by the Everett Public Schools automated phone system in emergencies and to share important school information with families.



3900 Broadway
Everett, WA 98201
425-385-4000
www.everettsd.org

Everett Public Schools does not discriminate in any programs or activities on the basis of sex, race, creed, religion, color, national origin, age, veteran or military status, sexual orientation, gender expression or identity, disability, or the use of a trained dog guide or service animal and provides equal access to the Boy Scouts and other designated youth groups.

Designated to handle inquiries about nondiscrimination policies are:

- Title IX Officer/Civil Rights Compliance Officer – Mary O'Brien, MO'Brien@everettsd.org, 425-385-4106
- 504 Coordinator – Becky Ballbach, rballbach@everettsd.org, 425-385-4063
- ADA Coordinator – Randi Seaberg, rseaberg@everettsd.org, 425-385-4104